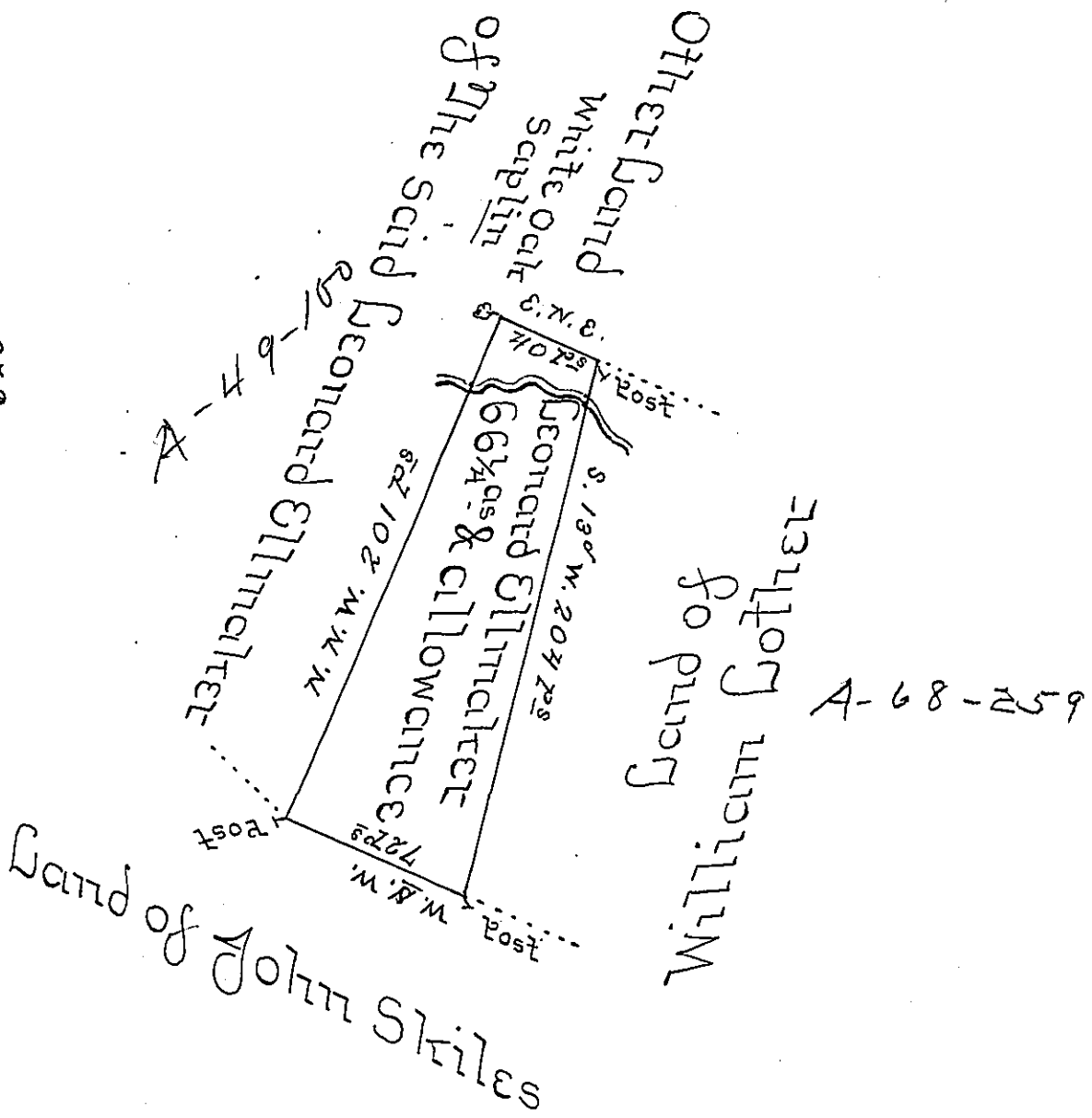


72.
 40
 112
 56
 201
 56
 1120
 11256
 10176
 10806
 10176
 620
 1696
 669498
 9691



By Virtue of a Warrant Dated The 21st Day of
 May 1761 Surveyed on the 20th Day of November
 Then Next Ensuing To Leonard Ellmaker The
 above Described Tract of Land Situate on a
 Small Branch of Mill Creek in The Township
 of Erie Town in The County of Lancaster
 Bounded and Bounded as above Described &c

R. Benja Lightfoot -

IN TESTIMONY that the above is a copy of the original remaining on file in
 the Department of Internal Affairs of Pennsylvania, made
 conformably to an Act of Assembly approved the 16th day of
 February, 1833, I have hereunto set my Hand and caused
 the Seal of said Department to be affixed at Harrisburg,
 this twenty seventh day of August 1904.

James P. Brown
 Secretary of Internal Affairs.